

TRAVIRA Chaise Lounge SLING



MATERIALS

Powder coated aluminum is durable and lightweight. The rust proof nature of the frame offers high quality and strength.

Teak has beautiful dense grain and high oil content allowing it to resist rot, moisture, warping and splintering.

Tekwood is a wood-alternative developed from polystyrene.

Tekwood provides the look of wood without the weathering process or maintenance. Composite Sling is made with Textilene®, a composite mesh fabric woven using PVC coated polyester.

ASSEMB. WIDTH	ASSEMB. DEPTH	ASSEMB. HEIGHT	ASSEMB. WEIGHT lbs	SEAT HEIGHT
32"	80"	23"	45	15"
CARTON # of BOXES	CARTON* WIDTH	CARTON* DEPTH	CARTON* HEIGHT	CARTON* WEIGHT lbs
①	88"	35"	38"	15

SHIPPING

Ships via LTL
Fully assembled

ASSEMBLY

No assembly required

CONSTRUCTION

Welded Aluminum

HARDWARE

Stainless Steel

Available in a qty. of TWO or FOUR only. *Shipping weight and dimensions are based on the largest case pack available.

MATERIAL options

SEAT/BACK & ARMCAPS



Black Sling TVL80B
Teak Armcaps



Black Sling TVL80BV
Tekwood Vintage Armcaps



Black Sling TVL80BN
Tekwood Natural Armcaps



Natural Sling TVL80C
Teak Armcaps



Natural Sling TVL80CV
Tekwood Vintage Armcaps



Natural Sling TVL80CN
Tekwood Natural Armcaps

COLOR options

LEAD TIME

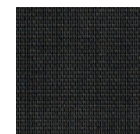
IN-STOCK 72 hrs

MINIMUM ORDER

2



White



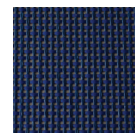
Black

LEAD TIME

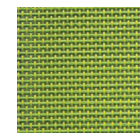
6-8 Weeks

MINIMUM ORDER

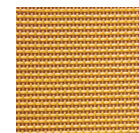
12 chaise lounges



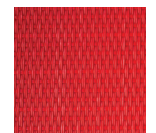
Ink Pen



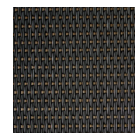
Go Green



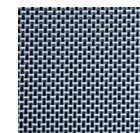
Curry



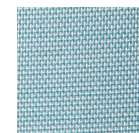
Red



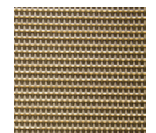
Ninja



Titanium



Glacier



Cocoa