

Teardown Sample Review

Customer : Universal
Vendor : LCJS
Collection : 507-818
Reviewed by : Carlos / David
Report Date : 7-27-2015

General Comments:

Solids : Rubberwood
Veneers: oak / walnut inlay



507-818
Round Cocktail Table

Dimension:

42"*19"H

The Overall Dimensions follow the drawing.



The carton



Close-up view



The package method



The package method



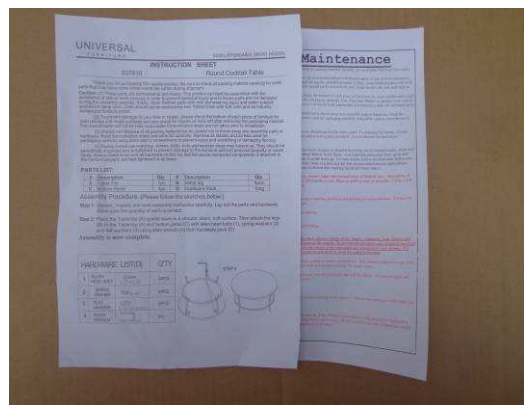
The package method



The package method



The package method



The AI view



The package method



The hardware pack



The package method



The package method



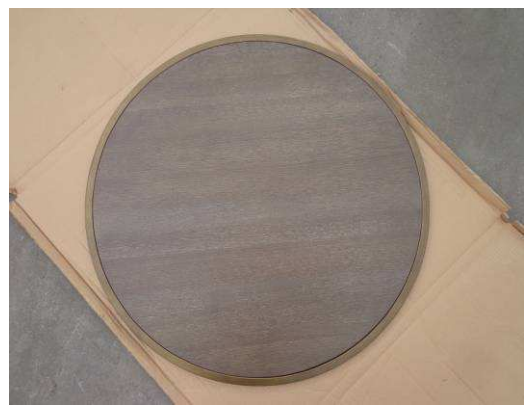
The package method



The package method



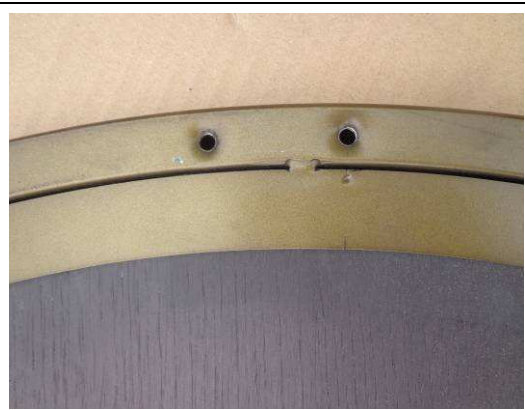
The package method



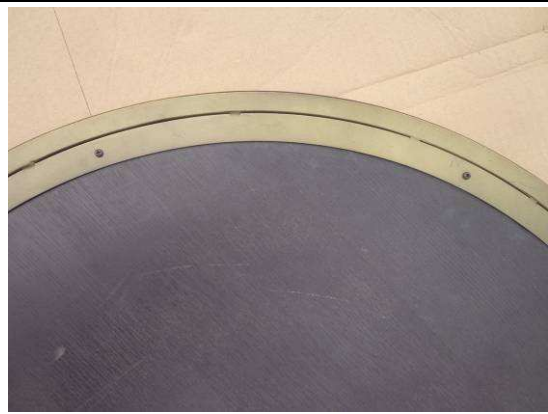
The bottom shelf



The back side view



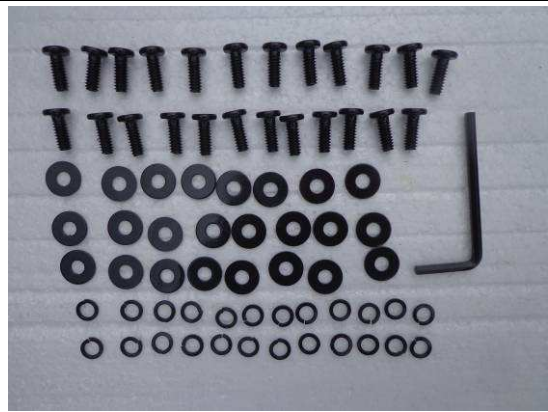
The close-up view



The close-up view



The metal parts view



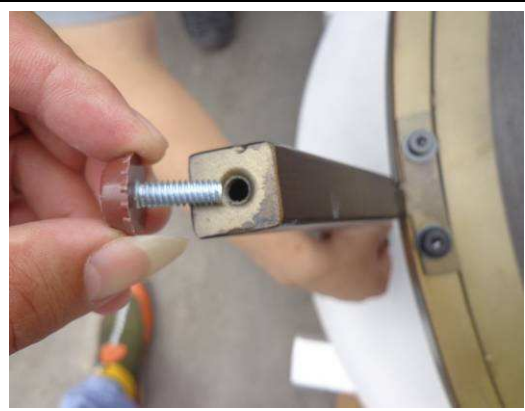
The hardware



The package method



The production sticker/QC sticker



The adjustable leveler



The bottom view



The close-up view



The close-up view



The top stone view



The side view



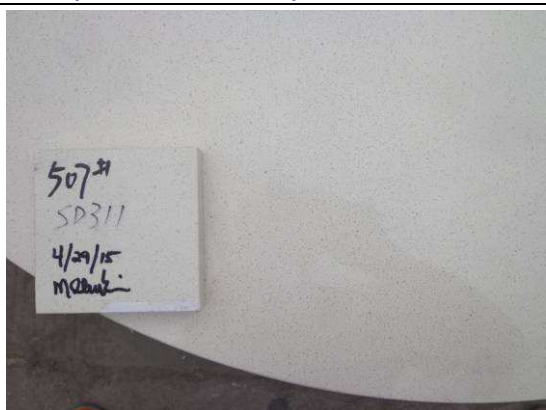
The plan view



Compare with color panel



Compare with stone standard



The stone standard



Compare with metal standard