

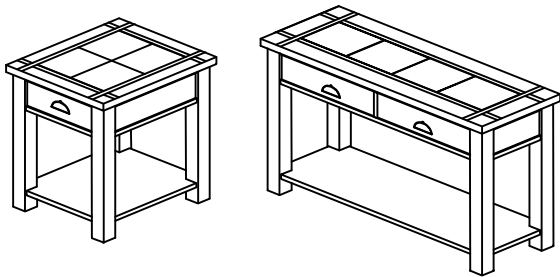


MAGNUSSEN
H O M E

Beyond the expected.[®]

ASSEMBLY INSTRUCTION : MODE D'EMPLOI:INSTRUCCIONES DE ENSAMBLE

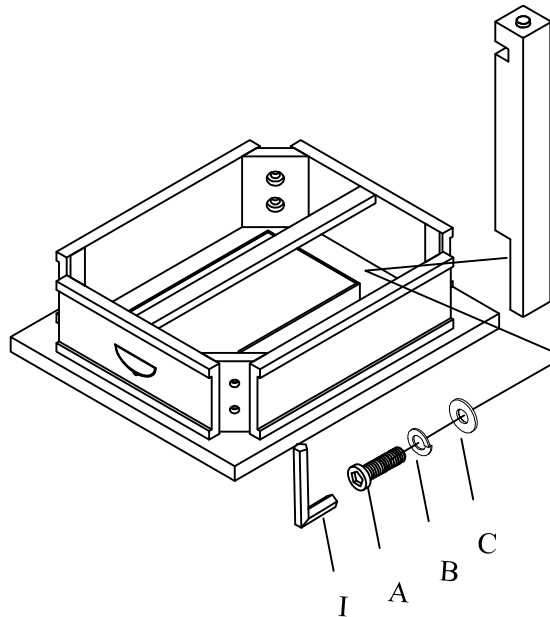
T2615-03/73



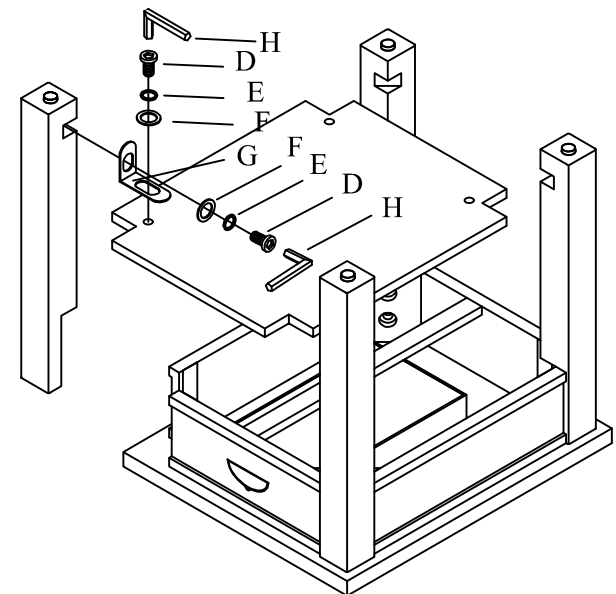
T2615-03

T2615-73

Step1:



Step2:



No.	PART	DESCRIPTION	T2615-03		T2615-73	
			MAG. CODE	QTY.	PART	QTY.
1		Leg	T2615-03L	4	T2615-73L	4
2		Bottom Shelf	T2615-03S	1	T2615-73S	1
3		Top Frame	T2615-03F	1	T2615-73F	1

ASSEMBLY HARDWARE

No.	PART	DESCRIPTION	QTY.	QTY.
A		Bolt Ø5/16"*2"L	8	8
B		Lock Washer Ø5/16"	8	8
C		Flat Washer Ø5/16"*19	8	8
D		Bolt Ø1/4"*5/8"L	8	8
E		Lock Washer Ø1/4"	8	8
F		Flat Washer Ø1/4"*16	8	8
G		Metal Puck	4	4
H		Allen Wrench(4mm)	1	1
I		Allen Wrench(5mm)	1	1

NOTE:

ASSEMBLE UNIT ON A SOFT SURFACE.
ASSEMBLEZ L'UNITÉ SUR UNE SURFACE MOLLE.
ENSAMBLE LA UNIDAD EN UNA SUPERFICIE PLANA Y SUAVE.

DO NOT TIGHTEN BOLTS UNTIL THE UNIT IS COMPLETELY ASSEMBLED.
NE SERREZ PAS LES BOULONS JUSQU'À CE QUE L'UNITÉ SOIT COMPLÈTEMENT ASSEMBLÉE.
KD FURNITURE SHOULD BE TIGHTENED PERIODICALLY TO AVOID BREAKAGE/DAMAGE.ANOID OVER TIGHTENING.
LOS SUJETADORES DE LOS MUEBLES KD SE DEBEN APRETAR PERIODICAMENTE A FIN DE EVITAR FOTURAS/DANOS.
PROCURENO APRETAR EN EXCESO.



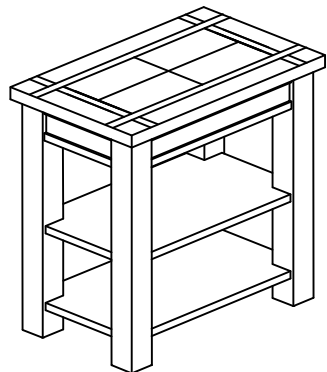
MAGNUSSEN

H O M E

Beyond the expected.[®]

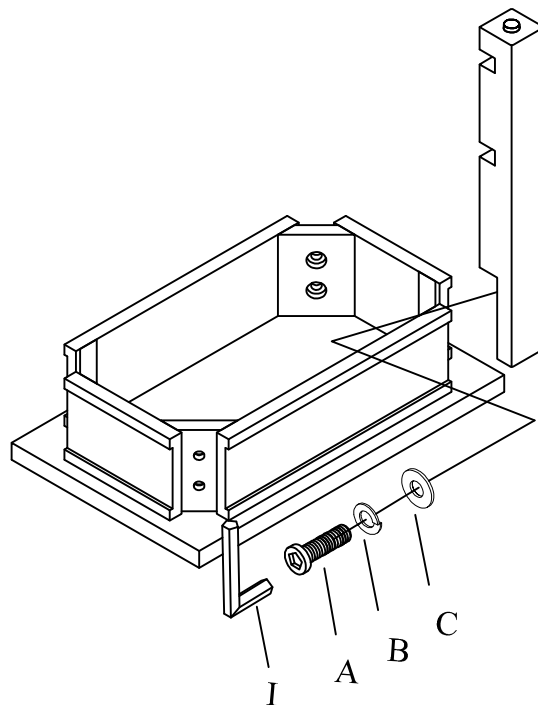
ASSEMBLY INSTRUCTION : MODE D'EMPLOI:INSTRUCCIONES DE ENSAMBLE

T2615-10

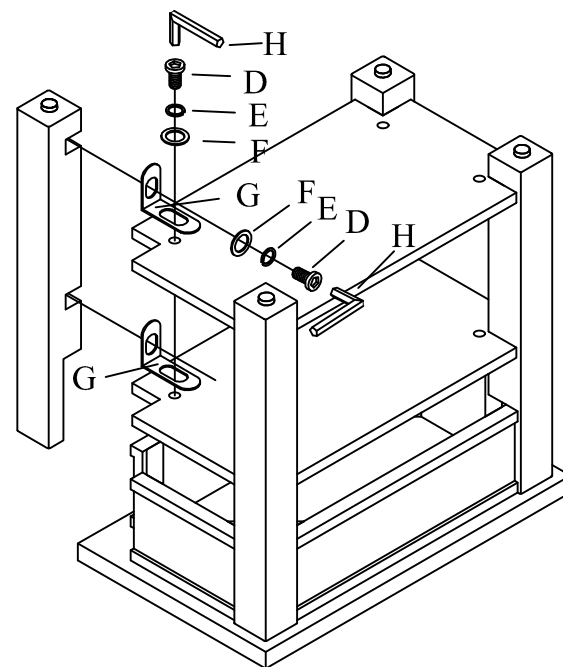


T2615-10

Step1:



Step2:



No.	PART	DESCRIPTION	T2615-10	
			MAG. CODE	QTY.
1		Leg	T2615-10L	4
2		Bottom Shelf	T2615-10S	2
3		Top Frame	T2615-10F	1

ASSEMBLY HARDWARE

No.	PART	DESCRIPTION	QTY.
A		Bolt Ø5/16"*2"L	8
B		Lock Washer Ø5/16"	8
C		Flat Washer Ø5/16"*19	8
D		Bolt Ø1/4"*5/8"L	16
E		Lock Washer Ø1/4"	16
F		Flat Washer Ø1/4"*16	16
G		Metal Puck	8
H		Allen Wrench(4mm)	1
I		Allen Wrench(5mm)	1

NOTE:

ASSEMBLE UNIT ON A SOFT SURFACE.
 ASSEMBLEZ L'UNITÉ SUR UNE SURFACE MOLLE.
 ENSAMBLE LA UNIDAD EN UNA SUPERFICIE PLANA Y SUAVE.

DO NOT TIGHTEN BOLTS UNTIL THE UNIT IS COMPLETELY ASSEMBLED.
 NE SERREZ PAS LES BOULONS JUSQU'À CE QUE L'UNITÉ SOIT COMPLÈTEMENT ASSEMBLÉE.
 KD FURNITURE SHOULD BE TIGHTENED PERIODICALLY TO AVOID BREAKAGE/DAMAGE. ANOÍD OVER TIGHTENING.
 LOS SUJETADORES DE LOS MUEBLES KD SE DEBEN APRETAR PERIÓDICAMENTE A FIN DE EVITAR FOTURAS/DANOS.
 PROCURENO APRETAR EN EXCESO.

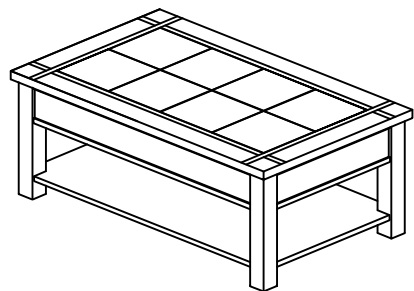


MAGNUSSEN
H O M E

Beyond the expected.[®]

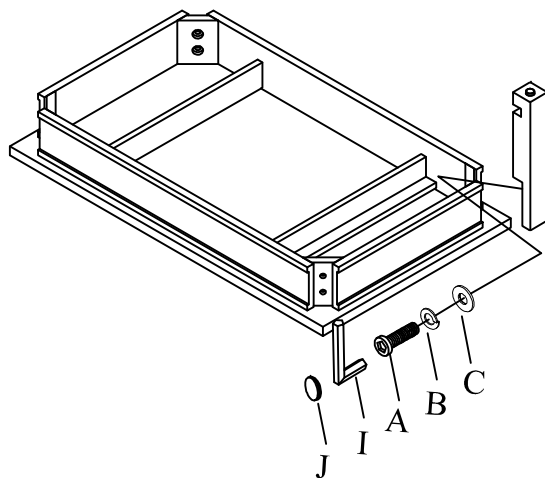
ASSEMBLY INSTRUCTION : MODE D'EMPLOI:INSTRUCCIONES DE ENSAMBLE

T2615-50

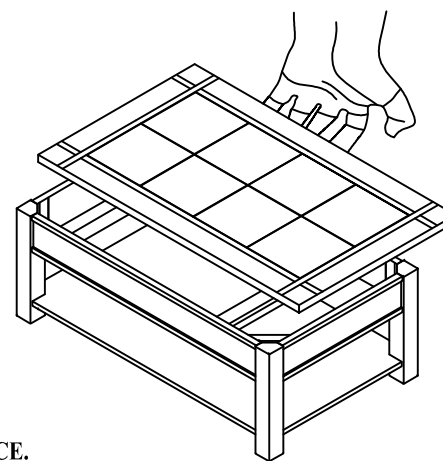
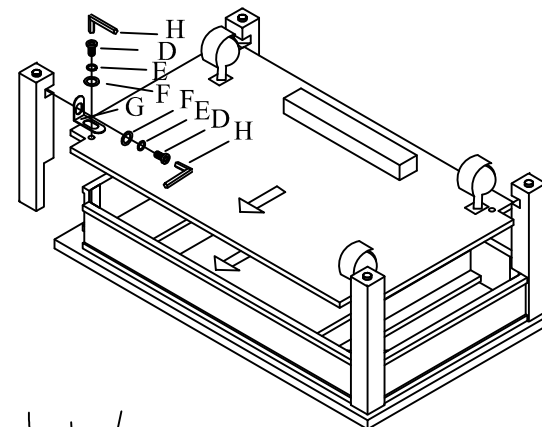


T2615-50

Step1:



Step2:



No.	PART	DESCRIPTION	T2615-50	
			MAG. CODE	QTY.
1		Leg	T2615-50L	4
2		Bottom Shelf	T2615-50S	1
3		Top Frame	T2615-50F	1

ASSEMBLY HARDWARE

No.	PART	DESCRIPTION	QTY.
A		Bolt Ø5/16"*2"L	8
B		Lock Washer Ø5/16"	8
C		Flat Washer Ø5/16"*19	8
D		Bolt Ø1/4"*5/8"L	8
E		Lock Washer Ø1/4"	8
F		Flat Washer Ø1/4"*16	8
G		Metal Puck	4
H		Allen Wrench(4mm)	1
I		Allen Wrench(5mm)	1
J		Plastic Cap(19mm)	8

NOTE:

ASSEMBLE UNIT ON A SOFT SURFACE.
 ASSEMBLEZ L'UNITÉ SUR UNE SURFACE MOLLE.
 ENSAMBLE LA UNIDAD EN UNA SUPERFICIE PLANA Y SUAVE.

DO NOT TIGHTEN BOLTS UNTIL THE UNIT IS COMPLETELY ASSEMBLED.
 NE SERREZ PAS LES BOULONS JUSQU'À CE QUE L'UNITÉ SOIT COMPLÈTEMENT ASSEMBLÉE.
 KD FURNITURE SHOULD BE TIGHTENED PERIODICALLY TO AVOID BREAKAGE/DAMAGE. ANOID OVER TIGHTENING.
 LOS SUJETADORES DE LOS MUEBLES KD SE DEBEN APRETAR PERIODICAMENTE A FIN DE EVITAR FOTURAS/DANOS.
 PROCURENO APRETAR EN EXCESO.