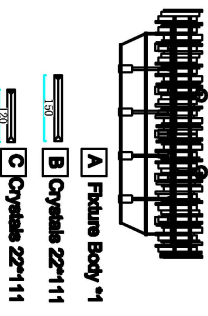


Assembly Instruction Sheet #S-1112P38-9 For Style 1112P38-9

Tools Required: Flathead screwdriver, Pliers screwdriver, pliers, wire cutters, wire stripper, electrical tape, safety glasses.
Light Source: (9) E12 Candelabra Base Bulbs 60W Maximum (Not Included).
Estimated Assembly Time: 30-40 minutes
Preparation: Identify and inspect all parts before beginning installation. Check package content list and diagrams before to be sure all parts are present. If any parts are missing or damaged, do not attempt to assemble, install, or operate the fixture. Contact customer service for replacement parts.

Warnings and Cautions
 Turn off electricity at circuit breaker or main fuse box before installation. Consult a licensed electrician if in doubt. These instructions are provided for your safety. It is very important you read them completely before installing the fixture. We strongly recommend that a licensed, professional electrician perform the installation. Disconnect fixture from power source before replacing bulbs. Make sure bulbs are given sufficient time to cool before removal.

Package Contents

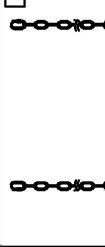


| PART | DESCRIPTION | QUANTITY |
|------|------------------|----------|
| AA | Cap nut | 20 |
| BB | Hex nut | 20 |
| CC | Outlet Box | 20 |
| DD | Mounting Screw | 20 |
| EE | Mounting bracket | 20 |

STEP 1 - Attach Mounting Screws, Lock Washers and Hex Nuts to Mounting Bracket.

A. Line up a set of holes on the Mounting bracket(EE) and Holes on the ceiling canopy. Thread Mounting Screws (DD) into the holes on the Mounting bracket (EE). Pass Lock Washers and Thread Hex Nuts onto the Mounting Screws (DD). Hand tighten until snug.

Figure 1



STEP 2 - Attach Mounting bracket to Outlet Box
 A. Press the supply wires through the Mounting bracket (EE). Attach the Mounting bracket (EE) to the Outlet Box with the head of the Green Ground Screw feeding you. Secure it with Outlet Box Screws (CC). Tighten until snug.

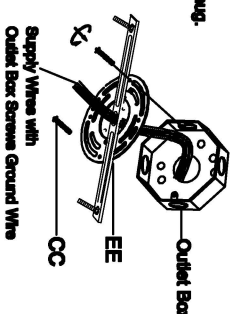


Figure 2

STEP 3 - Fit Ceiling Canopy to Mounting bracket Assembly

A. Fit the ceiling canopy to Mounting Screws (DD) and secure with Cap nut (AA). Note: The ceiling canopy should be snug against the ceiling and the Cap nut (AA). If not, adjust the length of the Mounting Screws (DD) by unscrewing the Hex Nut and Lock Washer and then screwing Mounting Screws (DD) in or out of the Mounting bracket(EE) until the correct length is achieved. Once the ceiling canopy is secure, remove the Cap nut (AA) and ceiling canopy and proceed to Step 4.

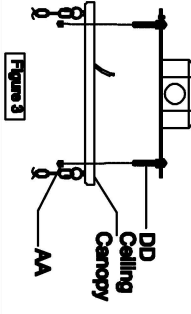


Figure 3

STEP 4 - Wire Connections

A. Use standard wire connectors to make all wire connections. Twist connectors until wires are tightly joined together. Wrap each connection with approved electrical tape and carefully stuff all the connected wires into the Outlet Box.

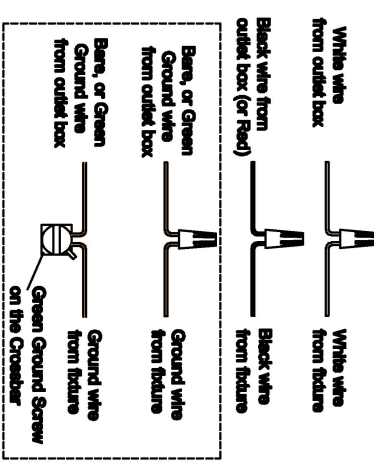


Figure 4

STEP 5 - Install Ceiling Canopy to Ceiling
 A. Carefully tuck all wires into the outlet box and position the ceiling canopy of the Fixture Body (A) over the outlet box. Align the holes in the ceiling canopy with the Mounting Screws (DD). Secure with Cap nut (AA) and hand tighten until snug.

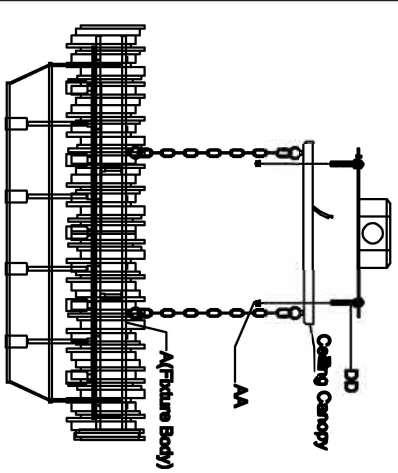
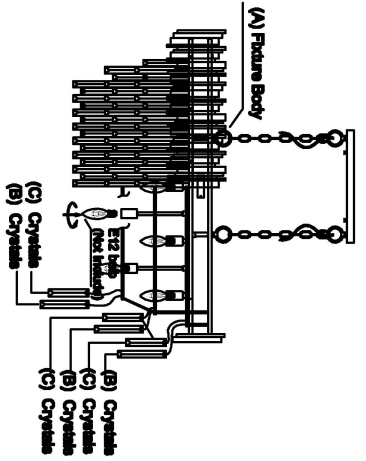


Figure 5

STEP 6 - Install Bulbs and Crystals.
 A. Install bulbs onto sockets and push snug into place.
 B. Please put the crystals to the Fixture Body (A)



- (B) Crystals 22*111
- (C) Crystals 22*111

Figure 6