

Assembly Instruction Sheet #HS-0409W8-1-101-A For Style 0409W8-1-101-A

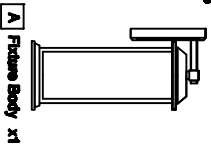
Total Required: Flathead screwdriver, Phillips screwdriver, pliers, wire cutters, wire strippers, electrical tape, safety glasses.

Light Source: (1) E26 Base Bulb only (Included/Not Included)
 Electrical Assembly Time: 15-30 minutes
 Precaution: Identify and inspect all parts before beginning installation. Check package content list and diagrams before to be sure all parts are present. If any parts are missing or damaged, do not attempt to assemble, test, or operate the fixture. Contact customer service for replacement parts.

⚠ Warnings and Cautions

Turn off electricity at circuit breaker or main fuse box before installation. Consult a licensed electrician if in doubt. These instructions are provided for your safety. It is very important you read them completely before installing the fixture. We strongly recommend that a licensed, professional electrician perform the installation. Disconnect fixture from power source before replacing bulbs. Make sure bulbs are given sufficient time to cool before removal.

Package Contents



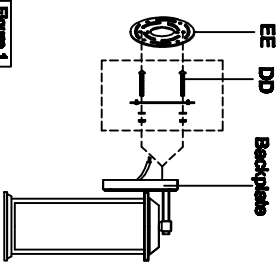
Hardware Contents

PART DESCRIPTION	QUANTITY
AA Cap nut	2ea
BB Wire nut	2ea
CC Outlet Box Screw	2ea
DD Mounting Screw	2ea
EE Mounting bracket	2ea

STEP 1 – Attach Mounting Screws, Lock Washers and Hex Nuts to Mounting bracket.

A. Line up a set of holes on the Mounting bracket (EE) and holes on the Backplate. Thread Mounting Screws (DD) into the holes on the Mounting bracket (EE). Push Lock Washers and Thread Hex Nuts onto the Mounting Screws (DD). Hand tighten until snug.

Figure 1



STEP 2 – Attach Mounting bracket to Outlet Box

A. Pass the supply wires through the Mounting bracket (EE). Attach the Mounting bracket (EE) to the Outlet Box with the head of the Green Ground Screw facing you. Secure it with Outlet Box Screws. Tighten until snug.

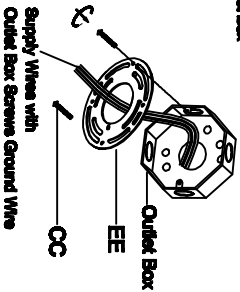


Figure 2

STEP 3 – Fit Backplate to Mounting bracket Assembly

A. Fit the backplate to Mounting Screws (DD) and secure with Cap nut (AA). Note: The backplate should be snug against the ceiling and the Cap nut (AA). If not, adjust the length of the Mounting Screws (DD) by unscrewing the Hex Nut and Lock Washer and then screwing Mounting Screws (DD) in or out of the Mounting bracket (EE) until the correct length is achieved. Once the backplate is secure, remove the Cap nut (AA) and backplate and proceed to Step 4

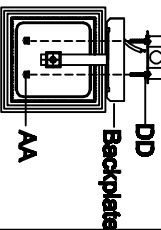


Figure 3

STEP 4 – Wire Connections

A. Use standard wire connectors to make all wire connections. Twist connection until wires are tightly joined together. Wrap each connection with approved electrical tape and carefully stuff all the connected wires into the Outlet box.

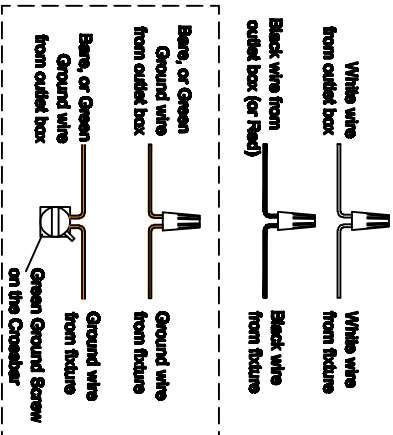


Figure 4

STEP 5 – Install Backplate to Ceiling

A. Carefully tuck all wires into the outlet box and position the backplate of the Fixture Body (A) over the outlet box. Align the holes in the backplate with the Mounting Screws (DD). Secure with Cap nut (AA) and hand tighten until snug.

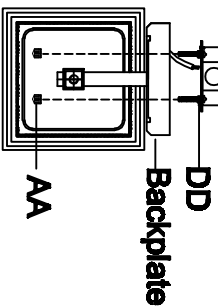


Figure 5

STEP 6 – Install bulb

A. Install bulbs into sockets and screw snug into place.

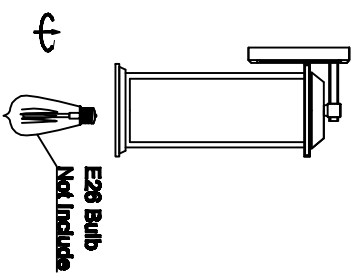


Figure 6